

# SDP Slag Door Pusher

SDP, a cost effective innovation for mini-mill producers from the engineers at KT-Grant. Our Slag Door Pusher design provides the safest, and most cost-effective system available for maintaining furnace slag door applications. Each unit is custom-er-specific, and designed to accommodate shop floor requirements and process work flow. Unlike forklifts and various other mobile equipment, SDP is designed specifically for cleaning and pushing scrap in the door sill. Various boom lengths allow easy reach to the slag door. With a push force of 39,260 lbs and a pull force of 25,000 lbs, scrap is pushed well into the furnace and slag build-up is pulled out into the pit. No rails are required, the unit is permanently mounted to the shop floor and can be parked vertically or horizontally. KT-Grant has been engineering and supplying equipment to melt shops since 1952.



## SPECIFICATIONS

### OPERATING RANGE:

Boom Stroke: 8' single stage  
16' double stage  
Boom Angle Up: 52°  
Boom Angle Down: 4°  
Boom Swing Left: 90°  
Boom Swing Right: 90°  
Boom Push Force: 39,260 lbs.  
Boom Pull Force: 25,000 lbs.

### POWER UNIT:

Length: 62"  
Width: 58"  
Height: 57"  
Hydraulic Fluid: Fire retardant  
(customer specific)  
Reservoir Capacity: 100 GAL.  
Weight: 1770 lbs.

### SDP DIMENSIONS:

Length Retracted: 20'-8 3/4" single stage  
23'-4 1/8" double stage  
Length Extended: 28'-8 3/4" single stage  
39'-4 1/8" double stage  
Width: 54" (minimum)  
Height: 60" (minimum)  
Weight: 10,600 lbs. single stage  
12,700 lbs. double stage

### HYDRAULIC SYSTEM

Operating Pressure: 2000 psi  
Boom Cylinder(s): One (1) single stage  
Two (2) double stage  
Hoist Cylinders: Two (2)

### CONTROLS:

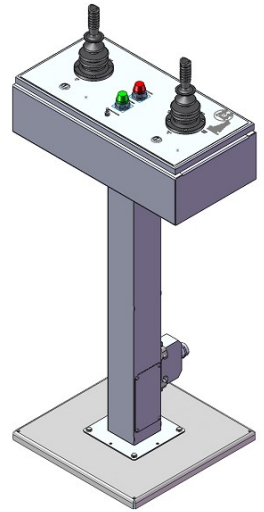
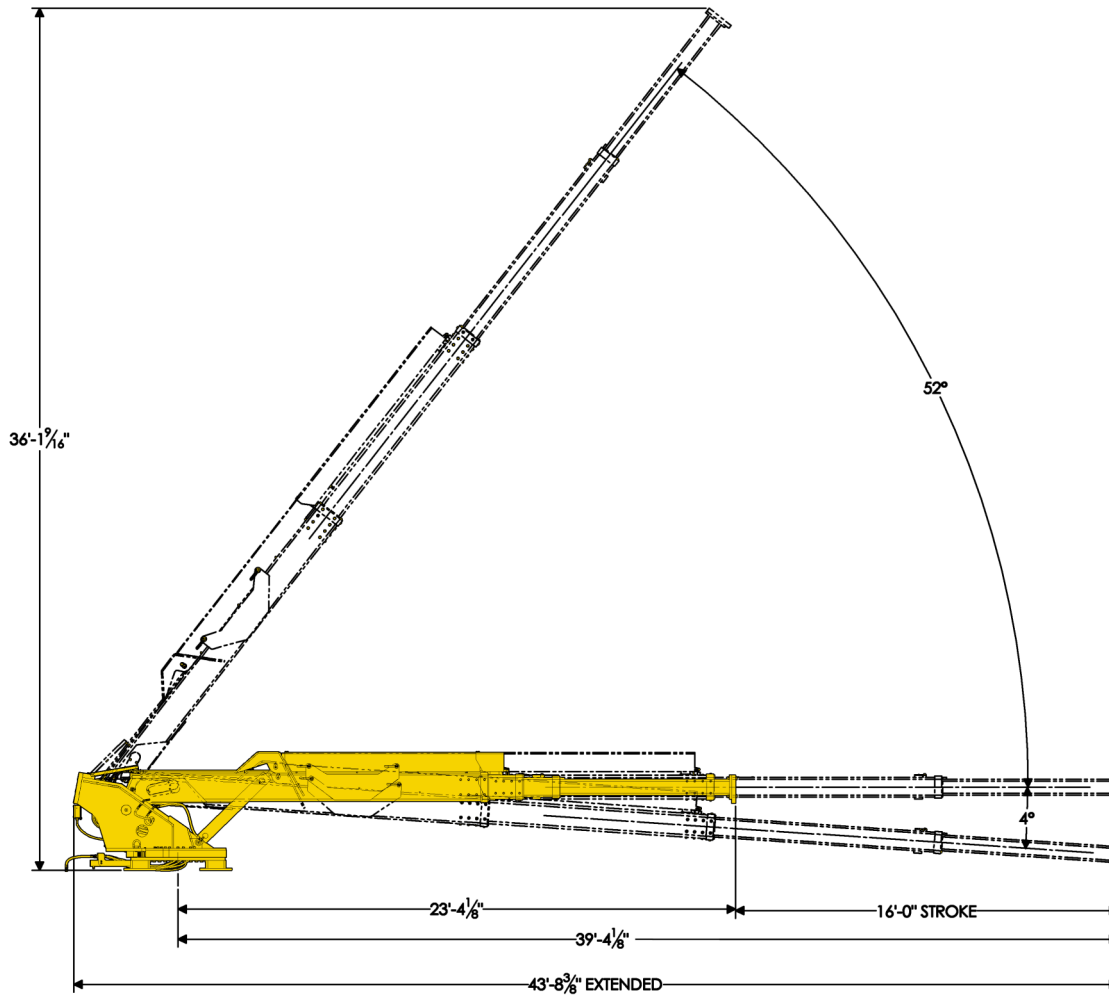
Pulpit joystick controls, optional stand alone joystick control console or radio joystick pendant



**3073 RT 66  
Export, PA 15632  
724-468-4700 Fax: 724-468-8188  
www.kt-grant.com**



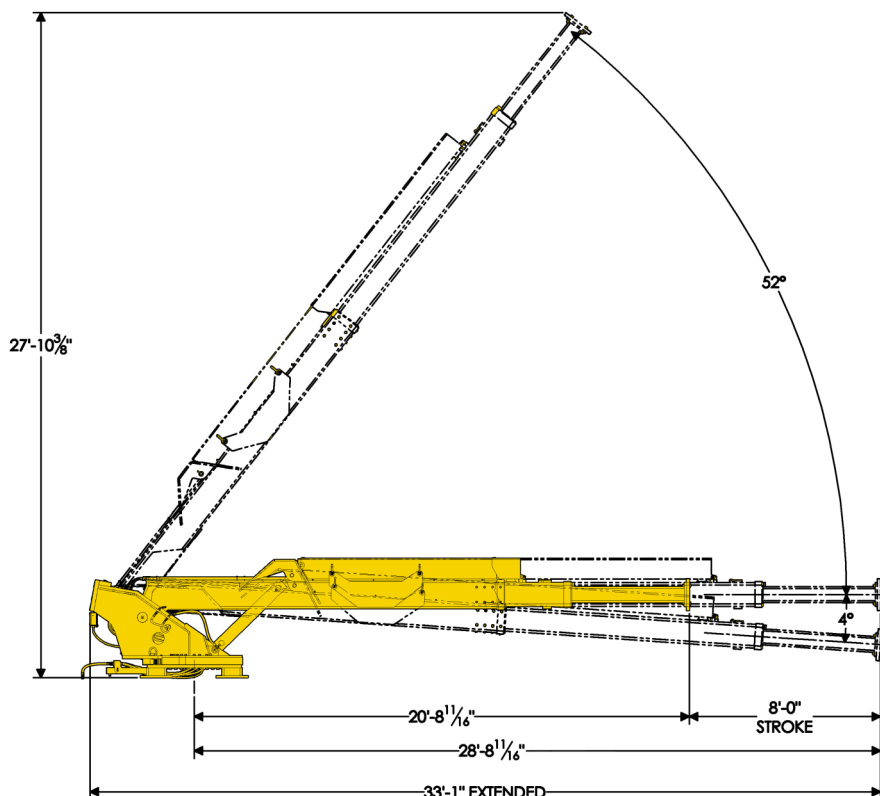
# SDP Working Range



Dual Joystick Control Console



Dual Joystick Pulpit Controls



Dual Joystick Radio Controls



Removable, pinned base