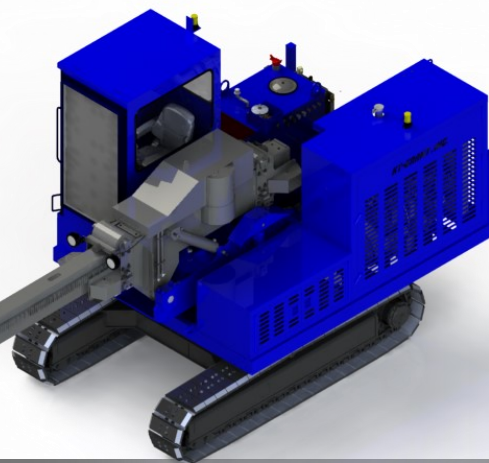


Mobile Furnace Tending Machine

KT-Grant's Mobile Furnace Tending Machine has been developed specifically for skimming dross from aluminum furnace applications. The MFTM offers a cab-mounted design to provide operators excellent line of sight and optimum safety during furnace drossing. Each MFTM is designed to withstand aluminum facility production environment and provide many years of reliable operation. The machine's long reach makes easy work of skimming the back of the furnace. Custom Mobile FTM designs are available to accommodate specific furnace geometries and operation requirements, including a tool function boom w/dross bucket option.



SPECIFICATIONS*



OPERATING RANGE:

Boom Stroke:	26'-9" (8153.4 mm)
Boom Angle Up:	28°
Boom Angle Down:	24°
Boom Swing:	Continuous 360°
Travel Speed:	1.2 MPH
Draw Bar Pull:	6000 lbs.

DIMENSIONS:

Length Retracted:	18'-5" (5612.2 mm)
Length Extended:	45'-2" (13768.3 mm)
Width:	8'-6" (2590.8 mm)
Height:	11'-2 3/4" (3422.6 mm)
Tracks:	Independent Bi-directional
Weight:	21,762 lbs. (9871 kg)
Minimum Sill Height:	3'-9" (1162.6 mm)
Maximum Sill Height:	7'-3" (2210.2 mm)

CONTROLS:

Cab mounted joystick console

HYDRAULIC SYSTEM:

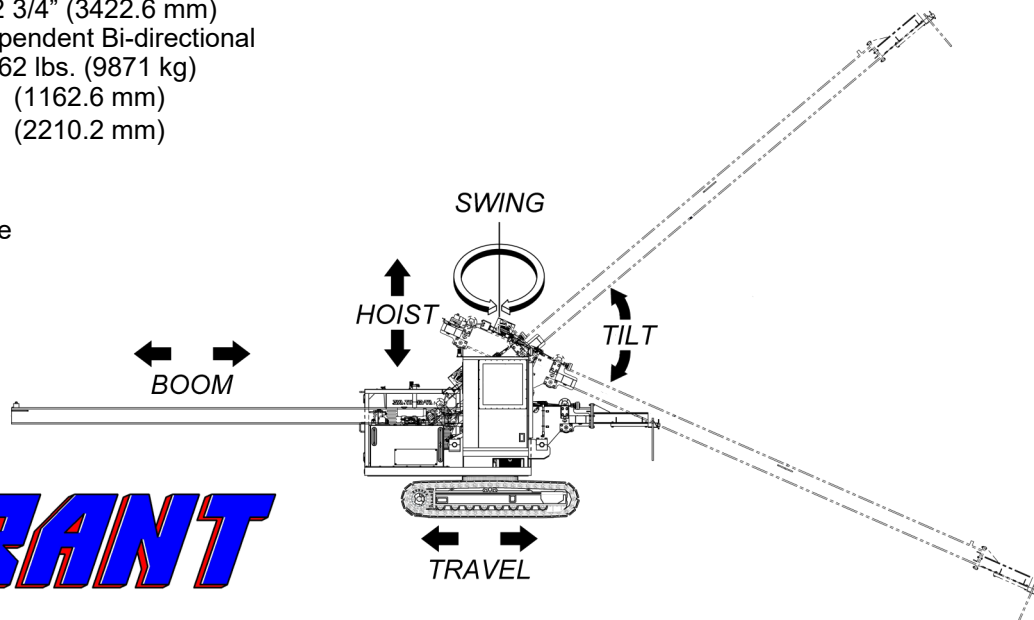
Pump:	Axial Piston
Hydraulic Fluid:	As per customer requirements
Reservoir Capacity:	110 gal. (416 L)
Operating Pressure:	3000 psi (206 bar)
Hoist Cylinders:	Two (2)
Tilt Cylinders:	Two (2)
Boom Drive Motor:	One (1)
Travel Motors:	Two (2)

ENGINE:

Model:	John Deere 4045
Type:	Diesel Tier III, liquid cooled, four cylinder
Output:	99 HP @ 2300 RPM (73.8 KW)
Fuel capacity:	55 GAL (208 L)
Fuel consumption:	5.8 GAL (21.9 L) per hour average @ full load

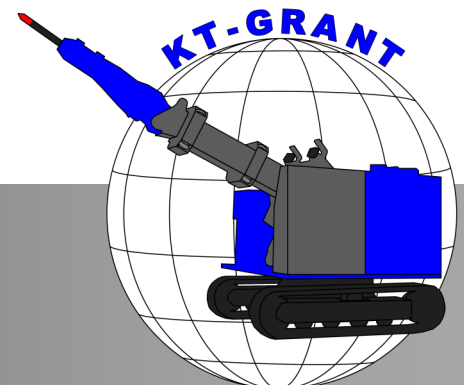
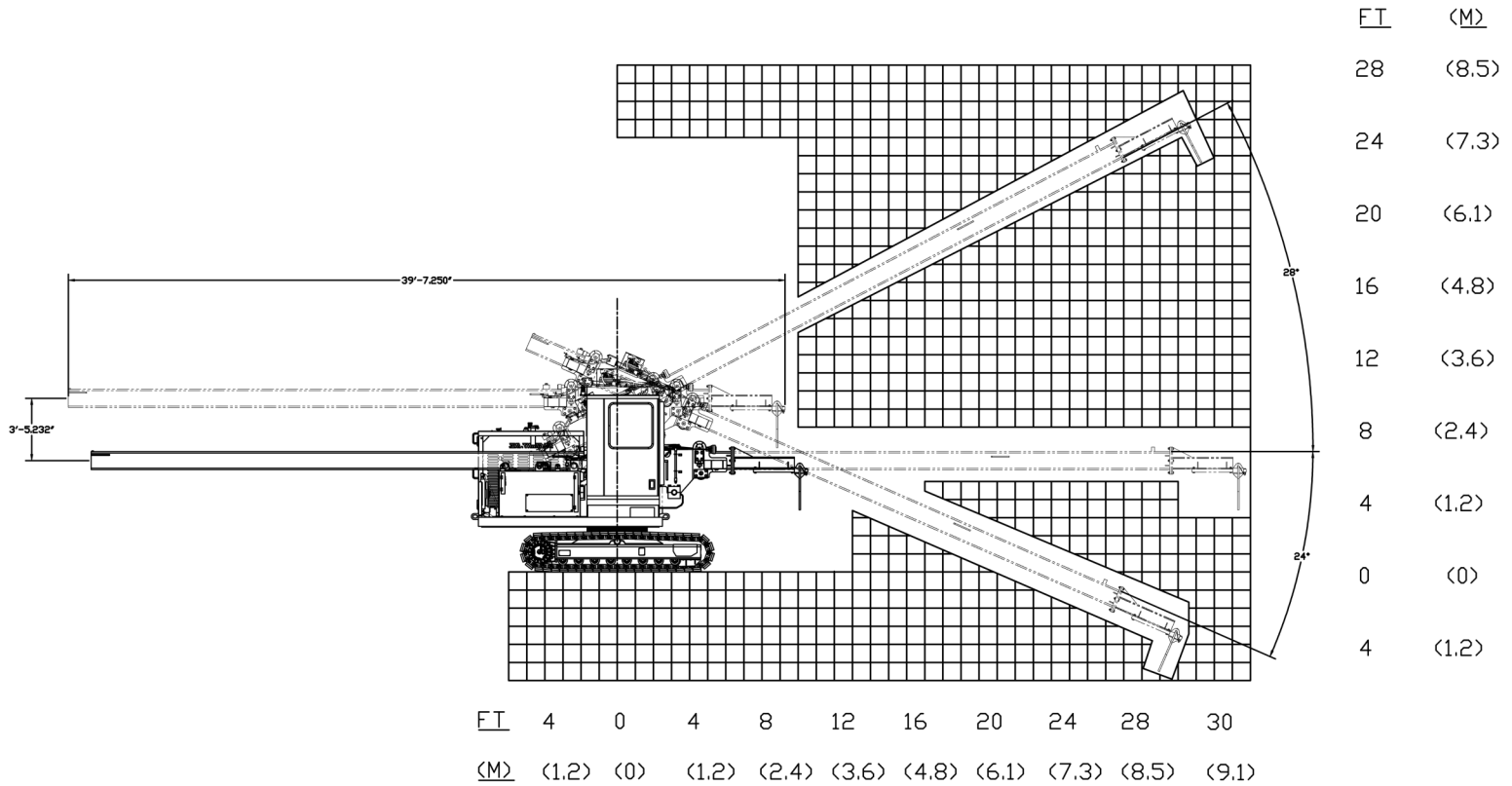
OPTIONAL EQUIPMENT:

Tier IV engine, joystick radio control, air conditioning, dross bucket



KT-GRANT

MFTM WORKING RANGE



3073 RT 66
Export, PA 15632
724-468-4700 Fax: 724-468-8188
www.kt-grant.com