



The GSK-150 skimmer utilizes a telescoping boom equipped with a paddle to skim kish/slag off of molten metal. The skimming operation is completed in 2 to 5 minutes depending on the thickness of the kish/slag or dross/solid bath and the location of the skimming unit.

Efficiency is increased by nearly 25%. Skimming decrease double slagged heats by almost 50%. Skimming results in more consistent, high quality end product than had been obtained to prior methods.

The GSK-150 should be located as close to the vessel as possible. Since each unit is custom made for a specific mill, the reach can be adjusted to meet individual specifications. The boom can be elevated up and down and swings through a 350° arc. The fully hydraulic machine is remote controlled by one man. The operator usually stands on the floor at vessel height or slightly above.

Two types of paddles are available, steel fabricated or cast. Life of the inexpensive paddle ranges up to two weeks depending on the operator.

The GSK-150 is permanently installed and one is required for each vessel.

SPECIFICATIONS

GENERAL

Machine length based on stroke
Stroke as per customer requirements, up to: 25' (7620mm)
Machine width: 4'-6" (1372mm)
Machine height minimum: 4'-11-3/4" (1508mm)
Reach from center of rotation
Based on stroke and tail swing:
Boom angle: +15° +15°
Swing angle up to: 355°
Base: 4'-6" SQ. (1372mm)
Skimmer weight dependant on stroke and configuration: 11000-15000 LBS (4990-6804KG)

POWER UNIT

Pump: Piston pressure compensated.
Operating pressure: 1200 PSI (82 Bar)
Motor: 40 Hp, 3 Ph, 230/460V, 60 Hz, 1765 Rpm
Reservoir heater: 460 Vac
Hoist cylinders: Two (2)
Reservoir capacity: 100 Gal (379L)
Hydraulic fluid: As per customers requirements

OPERATING SPEEDS

Telescope: 4 ft/sec (1219 mm/sec)
Hoist: 5 Deg/sec
Swing: 5 Deg/sec

CONTROLS

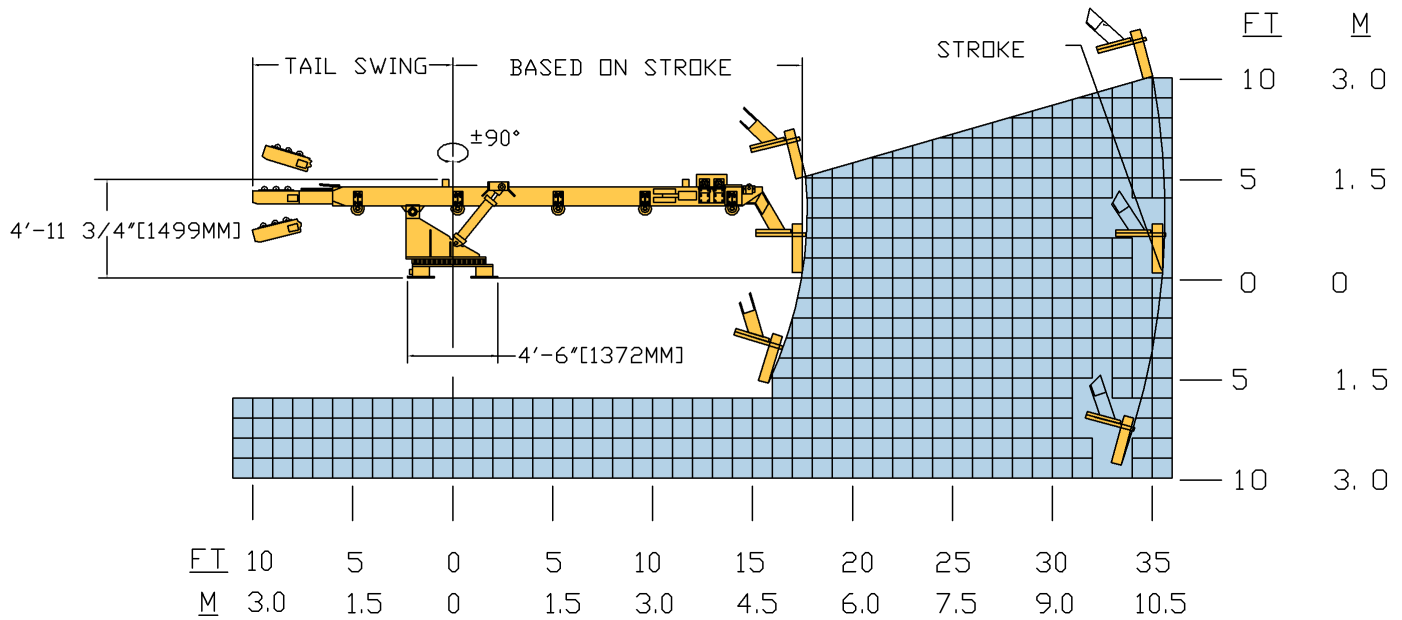
Control console: Pedestal base
Height: 3'-7" (1092mm)
Joysticks: Proportional

OPTIONAL EQUIPMENT

Double power unit, electric power unit dust covers, on and off board operators cab and power units, air conditioning, radio remote control, rail mounted

KT-GRANT

GSK-150-18 WORKING RANGE



Free Standing Hydraulic Power



Dual Joystick Control



3073 RT 66
Export, PA 15632
724-468-4700 Fax: 724-468-8188
www.kt-grant.com