

The KT-222 is one of the newest models in the KT-Grant, Inc. line of equipment. The hard hitting KT-222 fitted with a 1,500 foot pound hammer has the breaking power of equipment twice the KT-222's weight class. Although the KT-222 with 360 degree rotating boom can fit thru a 62" wide 68" high opening, it still has the ability to reach over 18 vertically and over 10 feet below ground level.

Designed with a telescopic boom, the KT-222 can work in limited overhead access locations where the competition will not fit. Fitted with radio joystick or pendant controls, the KT-222 safely keeps your operator away from hazardous working conditions and maximizes view of the work being performed.

Some of the attachments the KT-222 can be supplied with are, hydraulic hammers, shears, milling heads and drilling rigs. Contact us at KT-Grant, Inc. for other custom attachments that may suit your needs.



SPECIFICATIONS KTG-222

GENERAL

Machine length:	15'-5"	(4688 mm)
Machine width:	5'-1/2"	(1537 mm)
Machine height:	5'-6"	(1666 mm)
Extended reach from center of rotation to end of hammer (with out tool bit):	17'-5 1/2"	(5322 mm)
Vertical reach To end of hammer With stick up boom extended:	17'-8"	(5382 mm)
Reach below floor to hammer end vertical (without tool bit):	10'-3 3/4"	(3144 mm)
Boom Stroke:	4'-10 1/2"	(1486 mm)
Boom angles:	0°, +36°	
Stick angle:	0°, -55°	
Boom Tilt:	350° non-continuous	
Tool angles:	+30°, -90°	
Swing :	90° CW, 90° CCW	
Tracks:	Independent bi-directional	
Weight:	16,400 lbs.	(7439 kg)

HYDRAULIC SYSTEM

Hydraulic Pump:	Fixed Gear, Two Section
Pump Output:	25/21 GPM (1.6/1.35 LPS)
Pump NO #3:	Gear
Operating pressure:	1650 PSI (115 BAR)
Boom hoist cylinders two (2).	
Stick cylinders (2)	
Boom telescopic cylinder one (1).	
Tool cylinder one (1).	
Reservoir capacity:	110 GAL (416 L)
Hydraulic fluid:	As per customer requirements.

MOTOR

50 HP Electric Motor, 460 VAC , 1800 RPM

HAMMER

Model:	TNB-6E Hydraulic
Tool bit diameter:	3.7" (95 mm)

CONTROLS

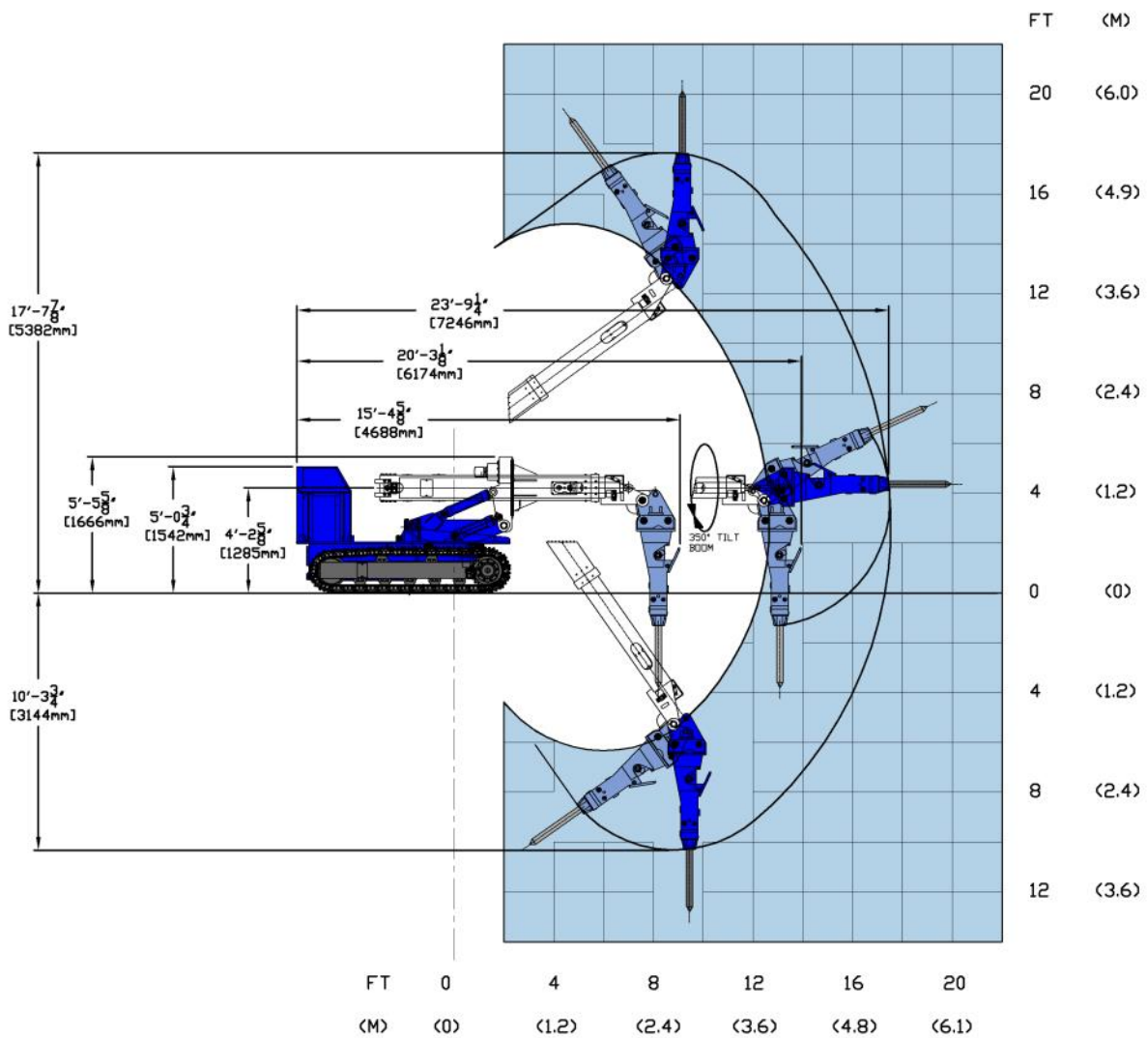
Wired on / off rocker switch pendant controls.

OPTIONAL EQUIPMENT

Radio controls, proportional load sense controls, refractory spray head, pneumatic hammer, shear, grapple, scrapper bit, reamer bit, spade bit, blast furnace trough grinder, buckets scoop, and porous plug pusher.

KT-GRANT, INC.

KTG-222 WORKING RANGE



3073 RT 66
 Export, PA 15632
 724-468-4700 Fax: 724-468-8188
 www.kt-grant.com