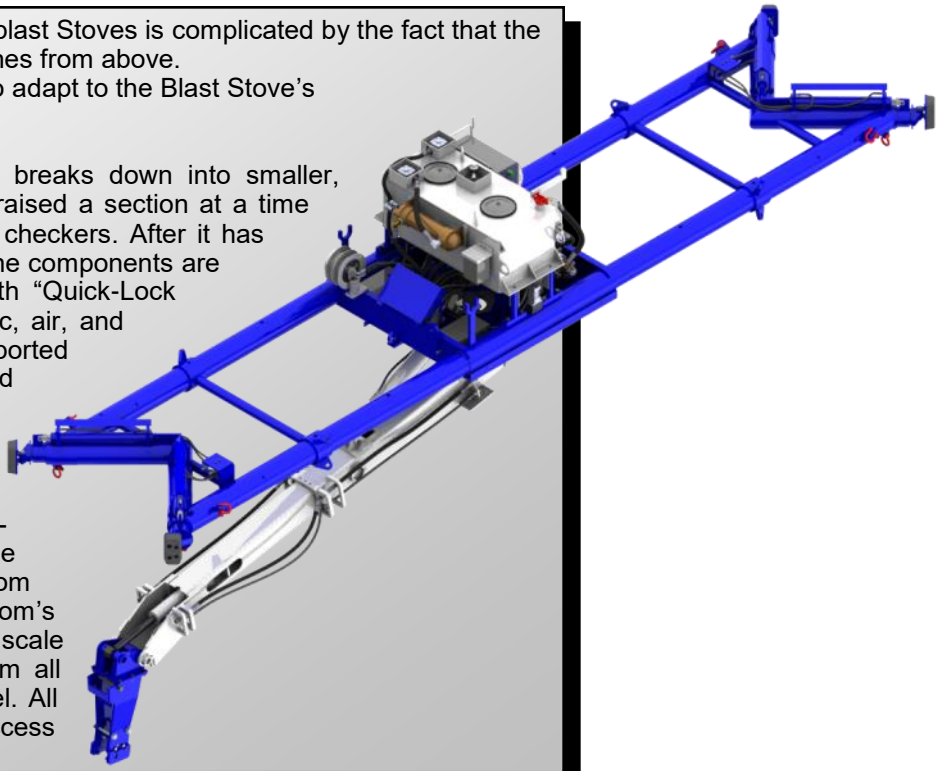


The removal of refractory brick from hot blast Stoves is complicated by the fact that the stoves are not served by heavy duty cranes from above. KT-Grant Inc. has designed a machine to adapt to the Blast Stove's specific working requirements

KT-Grant's GSM-1400, Stove Machine breaks down into smaller, lighter components, that can easily be raised a section at a time from the stove bottom and through the checkers. After it has been raised to the work area, the machine components are then assembled inside of the stove with "Quick-Lock Pins" and "Quick Couplers" for hydraulic, air, and electrical feed lines. It then can be supported from above by a cable winch, to raise and lower the entire machine.

The hydraulic operated outriggers extend outwards to secure the machine inside of the stove. A bridge can be adjusted along the frame rails to move the two-section, light weight, telescopic boom to a suitable working position. The boom's powerful hammer then can remove scale build-up, debris, or refractory lining from all around the inside diameter of the vessel. All debris is then disposed of through access opening at the bottom of the stove.



SPECIFICATIONS GSM-1400

GENERAL

Machine length:	Designed to suit stove diameter
Outrigger length:	Custom add-on sections to fit stove diameter
Machine width:	5'-0" (1524mm)
Machine height:	5'-3" (1600mm)
Reach from center of rotation to end of hammer (with out tool bit):	13"-0" (3962 mm)
Vertical reach from bearing plate to end of hammer with boom extended down (with out tool bit):	18'-3" (5563mm)
Boom stroke:	4'-0" (1219mm)
Boom angles:	+5°, -90°
Tool angles:	+30° -90°
Swing continuous:	360°
Typical weight:	14,000 lbs.(5225kg)

HYDRAULIC SYSTEM

Pump Output:	20 GPM (76 lpm)
Operating pressure:	1000 PSI (69 BAR)
Boom hoist cylinders:	Two (1).
Boom telescopic cylinder:	One (1).
Tool cylinder:	One (1).
Reservoir capacity:	50 GAL (189 L)
Hydraulic fluid:	As per customer requirements.

ELECTRIC MOTOR

Motor output:	20 HP
Power requirements:	460/230 VAC 3ph 60Hz

HAMMER

Model:	GK-211P Hydraulic
Tool bit diameter:	2-3/4" (69.85mm)

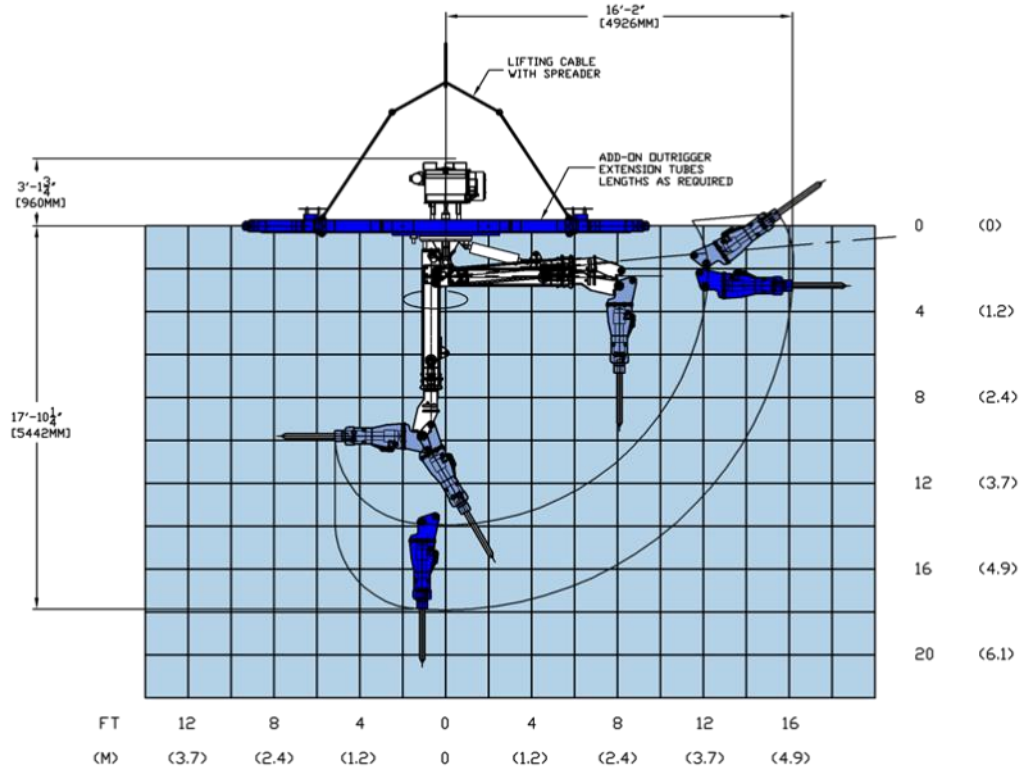
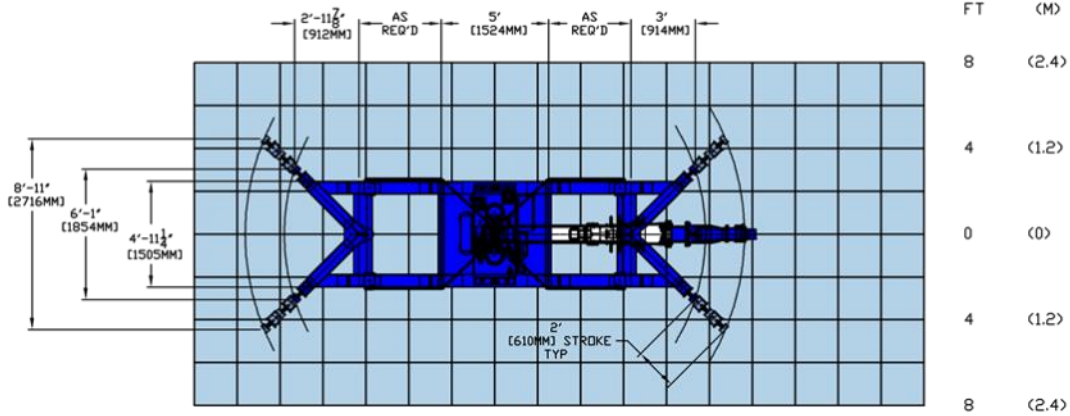
CONTROLS

Wired on / off rocker switch pendant controls.

OPTIONAL EQUIPMENT

Radio controls, proportional load sense controls, refractory spray head, pneumatic hammer, scrapper bit, spade bit

GSM-1400 WORKING RANGE



3073 RT 66
 Export, PA 15632
 724-468-4700 Fax: 724-468-8188
 www.kt-grant.com