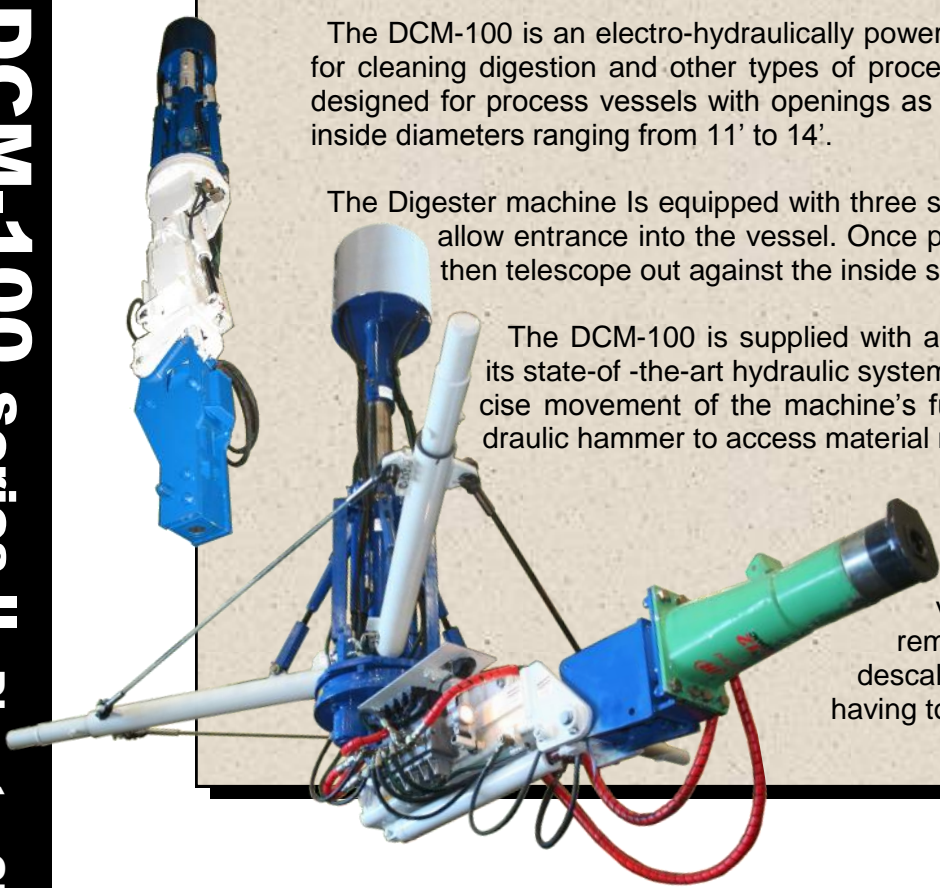


The DCM-100 is an electro-hydraulically powered machine developed by KT-Grant, Inc. for cleaning digestion and other types of process vessels. The DCM-100 is specifically designed for process vessels with openings as small as 18" in diameter, and tanks with inside diameters ranging from 11' to 14'.

The Digester machine is equipped with three stabilizer legs that automatically fold up to allow entrance into the vessel. Once positioned in the tank, the legs fold down, then telescope out against the inside shell wall.

The DCM-100 is supplied with a compact electric power unit to energize its state-of-the-art hydraulic system. Proportional control valves provide precise movement of the machine's functions for positioning the compact hydraulic hammer to access material removal more efficiently.

A specially designed cable hoist and powered hose reel assembly are used to lower the machine down into the vessel. An onboard video camera and remote joystick control allow the operator to descale portions of the inside walls without ever having to enter the tank.



## SPECIFICATIONS DCM-100 Series II

### GENERAL

Machine height:	7'	(2134 mm)
Machine weight:	2,200 Lb.	(1007 kg)
Power unit weight:	4,400 Lb.	(1996 kg)
Minimum inside dia.:	11'	(3352 mm)
Maximum inside dia.:	14'	(4267 mm)
Boom stroke:	1'-11"	(584 mm)
Boom angle:	+5°, -90°	
Tool angle:	+30°, -90°	
Swing:	360°	

### HOOK-UP REQUIREMENTS

Voltage: 480 VAC, 3-Phase, 60 Hz

### CONTROLS

Proportional joystick pendant controls, 12 VDC  
Boom mounted video camera

### HYDRAULIC SYSTEM

Outrigger raise/lower cylinder:	One (1)
Outrigger telescope cylinders:	Three(3)
Boom hoist cylinders:	One (1).
Boom telescopic cylinder:	One (1).
Tool cylinder:	One (1).
Electric Motor:	30HP
Hydraulic Pump:	Variable displacement, Pressure compensated

### HAMMER

Type:	Hydraulic
Tool bit diameter:	1 7/8" (40 mm)

### OPTIONAL EQUIPMENT

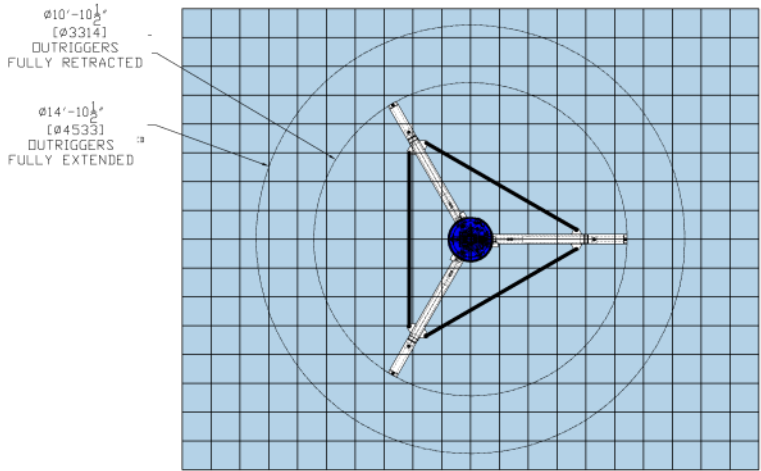
Hammer bits, spade bit

**KT-GRANT, INC.**

A Stein Company

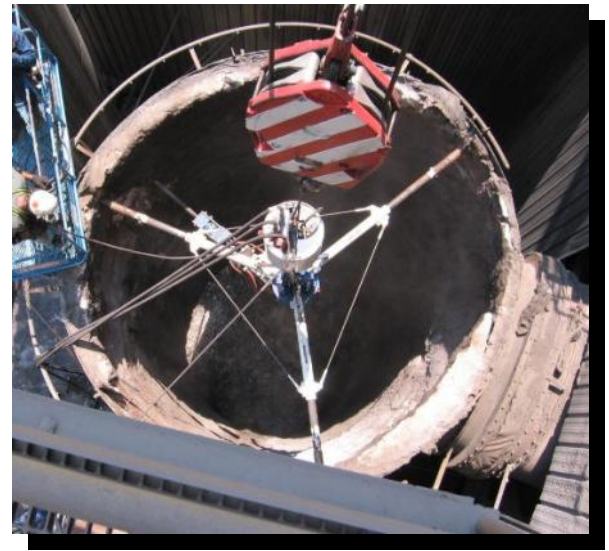


# DCM-100 WORKING RANGE

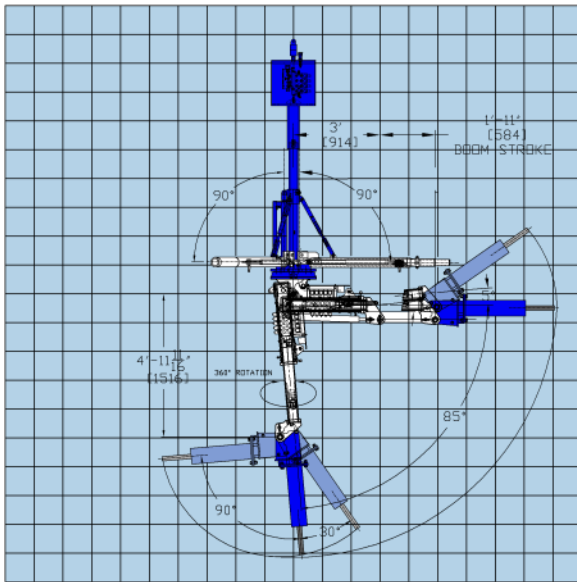


FT	10	8	6	4	2	0	2	4	6	8	10
(M)	(3.0)	(2.4)	(1.8)	(1.2)	(0.6)	0	(0.6)	(1.2)	(1.8)	(2.4)	(3.0)

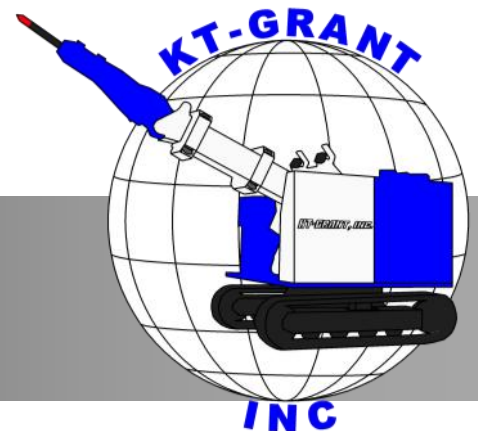
FT	(M)
8	(2.4)
6	(1.8)
4	(1.2)
2	(0.6)
0	(0)
2	(0.6)
4	(1.2)
6	(1.8)
8	(2.4)



FT	(M)
10	(3.0)
8	(2.4)
6	(1.8)
4	(1.2)
2	(0.6)
0	(0)
2	(0.6)
4	(1.2)
6	(1.8)
8	(2.4)
10	(3.0)



FT	10	8	6	4	2	0	2	4	6	8	10
(M)	(3.0)	(2.4)	(1.8)	(1.2)	(0.6)	0	(0.6)	(1.2)	(1.8)	(2.4)	(3.0)



3073 RT 66  
 Export, PA 15632  
 724-468-4700 Fax: 724-468-8188  
[www.kt-grantinc.com](http://www.kt-grantinc.com)