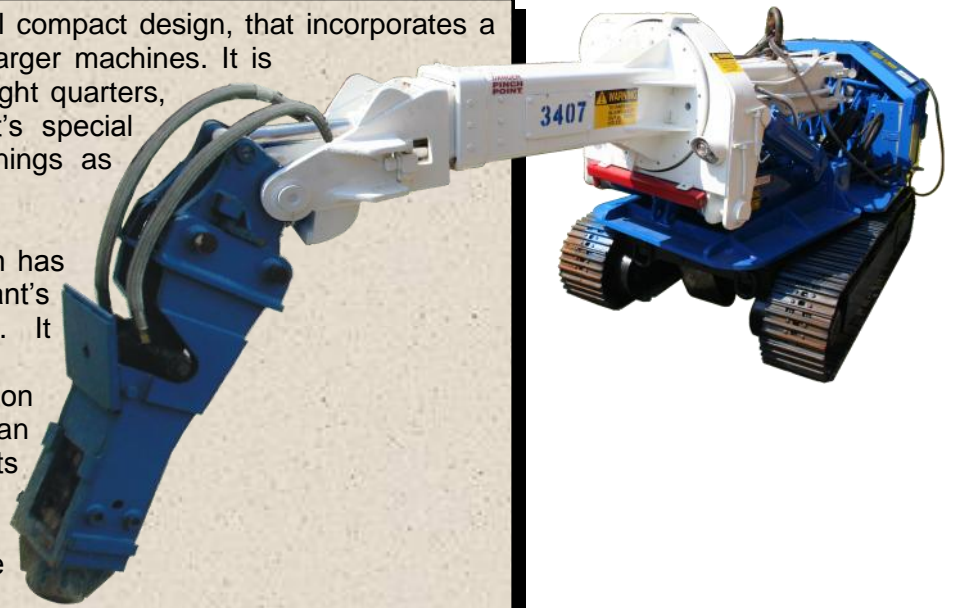


The KT-20 Machine has an overall compact design, that incorporates a versatile working range found in larger machines. It is perfect for work sites situated in tight quarters, with minimal access openings. It's special design allows entry through openings as small as 62" wide x 68" high.

The KT-20's versatile boom design has features found on many of KT-Grant's much larger equipment models. It features a telescopic boom with 4'-10 1/2" of stroke. The stick function can raise the boom/tool to an elevation of 17'-8". The cradle tilts the boom 350° CW/CCW, and it can angle the boom down, to extend the tool 10'-3 3/4" below the operating platform.

Like most of KT-Grant's machines, the KT-20 is remotely controlled from a safe distance, to keep the operator away from hazardous working conditions, and allowing for better overall visibility of the job environment.



SPECIFICATIONS KT-20

GENERAL

Machine length:	15'-5"	(4688 mm)
Machine width:	5'-1/2"	(1537 mm)
Machine height:	5'-6"	(1666 mm)
Extended reach from center of rotation to end of hammer (with out tool bit):	17'-5 1/2"	(5322 mm)
Vertical reach To end of hammer With stick up boom extended:	17'-8"	(5382 mm)
Reach below floor to hammer end vertical (without tool bit):	10'-3 3/4"	(3144 mm)
Boom Stroke:	4'-10 1/2"	(1486 mm)
Boom angles:	0°, +36°	
Stick angle:	0°, -55°	
Boom Tilt:	350° non-continuous	
Tool angles:	+30°, -90°	
Swing :	90° CW, 90° CCW	
Tracks:	Independent bi-directional	
Weight:	15,500 lbs.	(7031 kg)

HYDRAULIC SYSTEM

Hydraulic Pump:	Fixed Gear, Two Section
Pump Output:	25/21 GPM (1.6/1.35 LPS)
Pump NO #3:	Gear
Operating pressure:	1650 PSI (115 BAR)
Boom hoist cylinders two (2).	
Stick cylinders (2)	
Boom telescopic cylinder one (1).	
Tool cylinder one (1).	
Reservoir capacity:	110 GAL (416 L)
Hydraulic fluid:	As per customer requirements.

MOTOR

50 HP Electric Motor, 460 VAC , 1800 RPM

HAMMER

Model:	GRH-125 Hydraulic
Tool bit diameter:	3" (76.2 mm)

CONTROLS

Wired on / off rocker switch pendant controls.

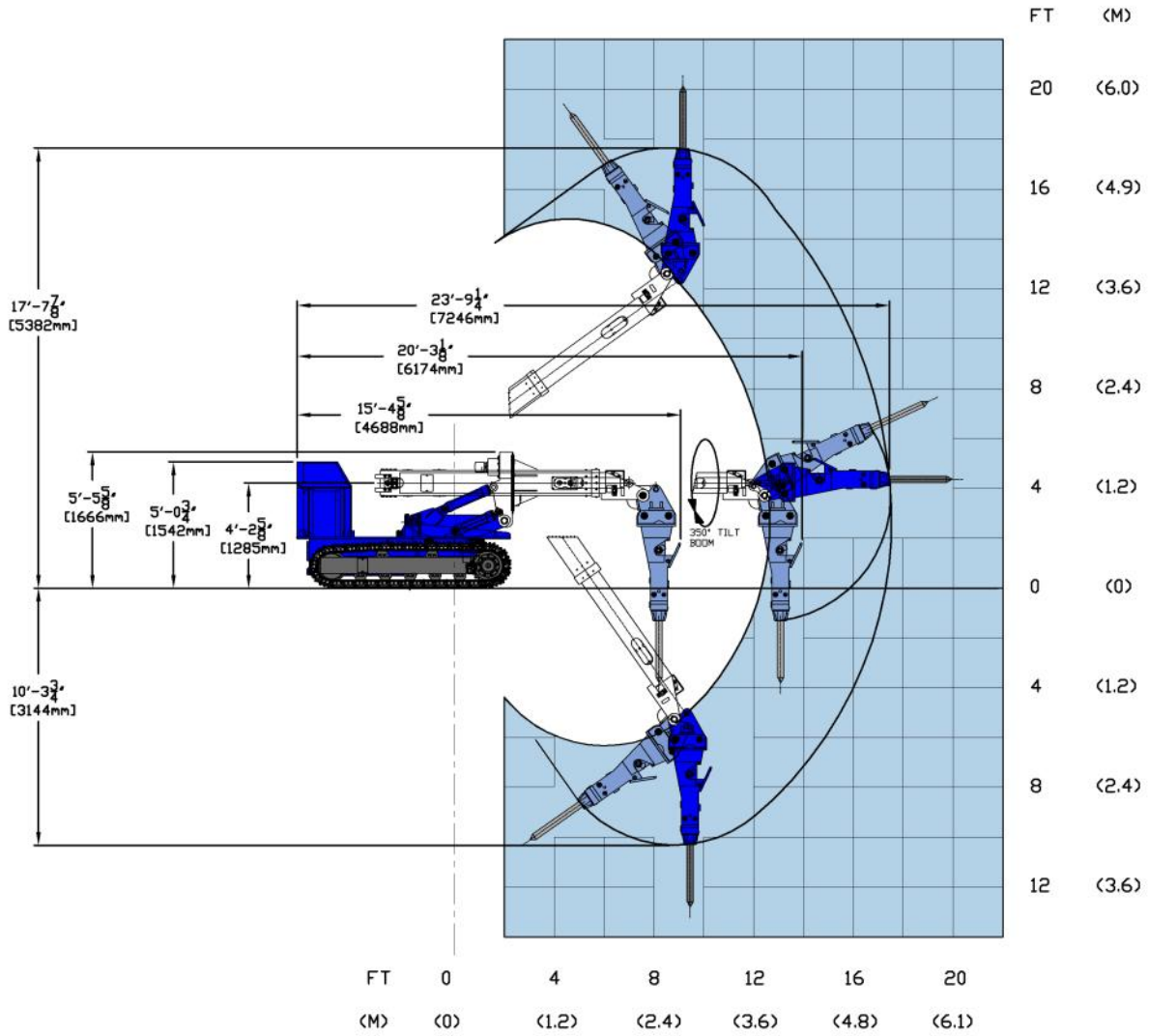
OPTIONAL EQUIPMENT

Radio controls, proportional load sense controls, refractory spray head, pneumatic hammer, shear, grapple, scrapper bit, reamer bit, spade bit, blast furnace trough grinder, buckets scoop, and porous plug pusher.

KT-GRANT, INC.

A Stein Company

KT-20 WORKING RANGE



3073 RT 66
 Export, PA 15632
 724-468-4700 Fax: 724-468-8188
www.kt-grantinc.com