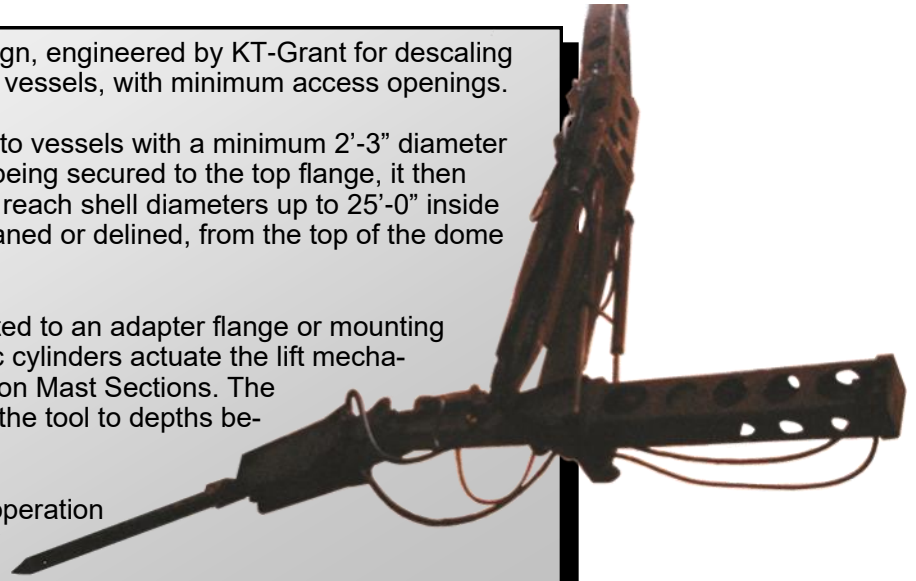


The ATM-1 is a unique equipment design, engineered by KT-Grant for descaling and delining the inside of round vertical vessels, with minimum access openings.

The ATM-1 machine can be lowered into vessels with a minimum 2'-3" diameter opening on the top of the vessel. After being secured to the top flange, it then unfolds, and is able to extend its tool to reach shell diameters up to 25'-0" inside diameters. The vessel walls can be cleaned or delined, from the top of the dome to the bottom of the base.

The machine's lift mechanism is mounted to an adapter flange or mounting frame at the top of the vessel. Hydraulic cylinders actuate the lift mechanism to raise and lower additional bolt-on Mast Sections. The boom can then be lowered, positioning the tool to depths below 50 feet.

The ATM-1 Machine's remote control operation offers agile maneuverability that quickly completes the task at hand, without having laborers needing to enter the vessel.



## SPECIFICATIONS

### GENERAL

Minimum access opening:	2'-3"	(686 mm)
Maximum shell I.D. w/6" bit:	29'-4"	(8941mm)
Machine length:	3'-4"	(1014 mm)
Machine width:	2'-6"	(762 mm)
Machine height (stowed):	11'	(3353 mm)
Bolt-on Mast Section:	10'	(3048 mm)
Quantity:	four	
Machine weight:	5,540 lb	(2513 kg)

Reach from center of rotation to end of hammer (without tool bit): 11'-6" (3505 mm)

Vertical reach to hammer end (without tool bit): 53'-3" (16230 mm)

Boom stroke:	3'	(914 mm)
Swing continuous:	360°	
Stick angle:	+135, -0°	
Boom angles:	+30°, -0°	
Tool angles:	+15°, -85°	

### POWER UNIT

Length:	5'-5"	(1651 mm)
Width:	5'-5"	(1651 mm)
Height:	5'-5"	(1651 mm)

Weight: 2,471 lb (1121 kg)

### HYDRAULIC SYSTEM

Mast Lift cylinders:	Two (2)
Boom hoist cylinders:	Two (2)
Boom telescopic cylinder:	One (1)
Tool cylinder:	One (1)
Electric Motor:	30HP
Hydraulic Pump:	29.5 GPM @ 1800 RPM
Reservoir capacity:	50 GAL ( 189 L)
Heat Exchanger:	External supplied Water cooling

### PLANT REQUIREMENTS

Voltage:	460 VAC, 100 A, 3-PH, 60Hz
Air Supply:	100 psi @ 125 cfm
Cold Water Supply:	3/4" min. 10 GPM supply line

### HAMMER

Type:	Pneumatic
Tool bit diameter:	2 3/8" (60 mm)

### CONTROLS

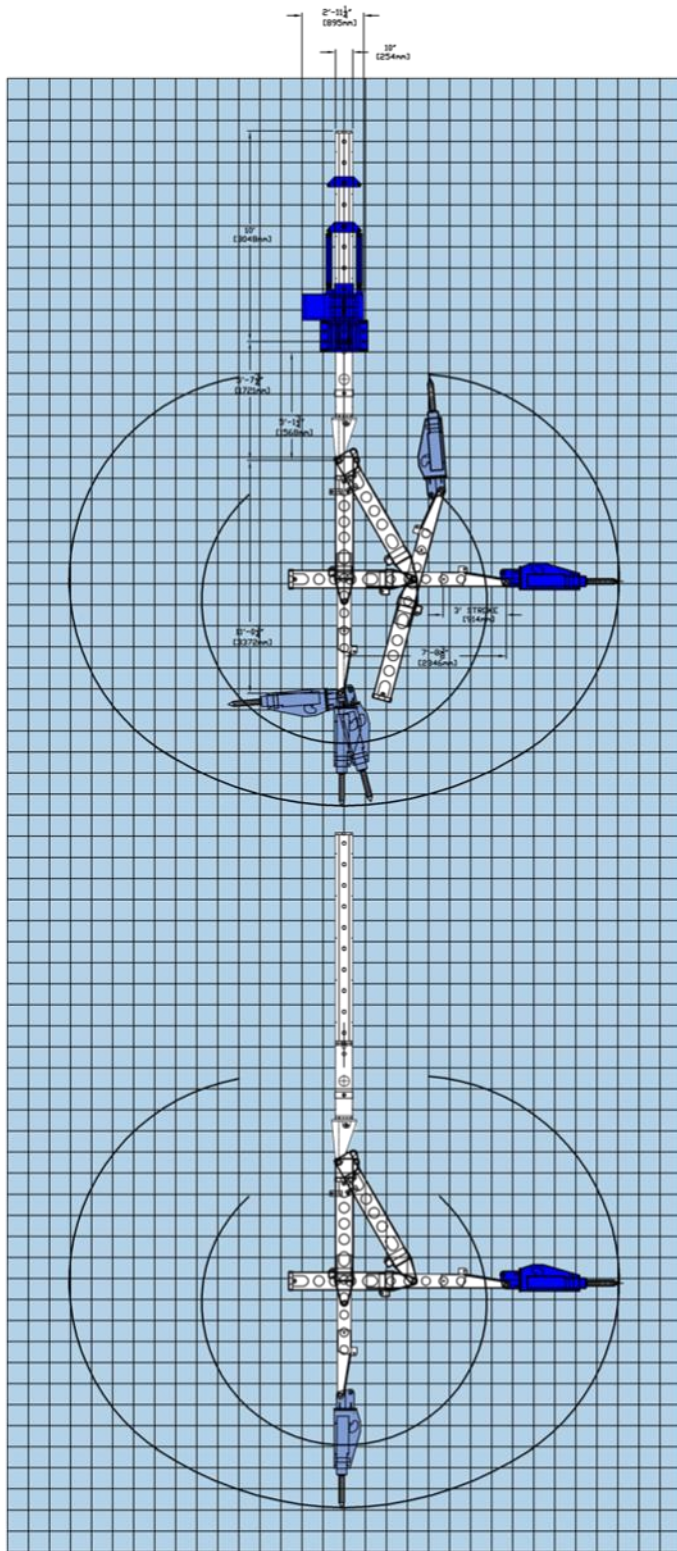
Wired proportional rocker switch pendant controls.

### OPTIONAL EQUIPMENT

Spade bits, moil points, scraper bits

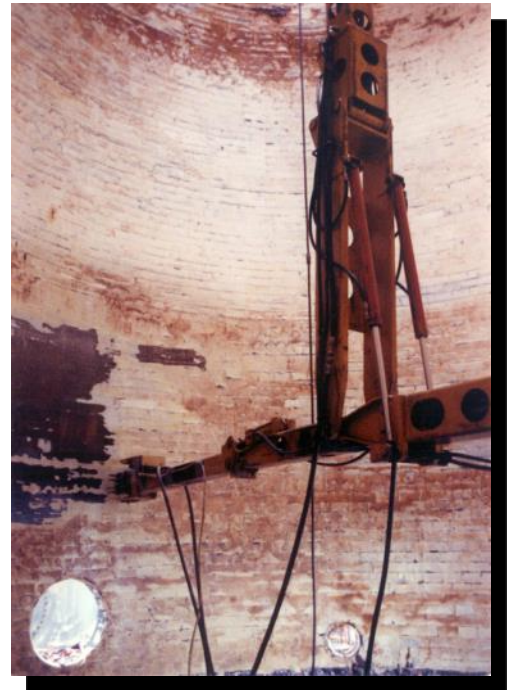
# KT-GRANT

# ATM-1 WORKING RANGE



FT	(M)
10	3.0
5	(1.5)
0	(0)
5	(1.5)
10	3.0
15	(4.6)
20	(6.1)
25	(7.6)
30	(9.1)
35	(10.7)
40	(12.2)
45	(13.7)
50	(15.2)
55	(16.8)

FT	15	10	5	0	5	10	15
(M)	(4.6)	(3.0)	(1.5)	(0)	(1.5)	(3.0)	(4.6)



**3073 RT 66**  
**Export, PA 15632**  
**724-468-4700 Fax: 724-468-8188**  
**www.kt-grant.com**