

The GEF-530 drastically reduces the time required to remove the lining from an electric furnace and at the same time do the job with substantially less man-hours. For example, two men and a GEF-530 can make a normal teardown (bands and walls to the slag line) on a 150 ton furnace in 4 to 6 hours including the installation of the machine. GEF-530s can be placed on furnaces ranging from 50 to 350 tons.

In use GEF-530 is positioned on top of the electric furnace. The boom underneath the main frame can be rotated 360° and telescoped in and out to position the hammer for lining removal. The outrigger support beams can be extended and retracted to fit furnaces from 10 ft. to 35 ft. in diameter (3.05M to 10.68M).

In operation the GEF-530 is remote controlled by a hand held control pendant connected by a 50 ft. cable (15.24M). Normally the operator stands on the furnace catwalk but he may also move to the furnace door or stand on the furnace shell in order to obtain the best view of the machine working. The normal crew for operation of the machine is an operator and one helper. The machine can be installed and start work as soon as the furnace is down—minimal cooling period is required.



SPECIFICATIONS GEF-530-72R

GENERAL

Machine length:	Up to 40' (12.1m)
Minimum diameter:	15' (4.5m)
Maximum diameter:	40' (12.1m)
Machine width:	7'-4" (2235mm)
Machine height :	As per requirements
Reach from center of rotation with out tool bit:	20'-10-3/4" (6369mm)
Boom angle:	+15° -90°
Tool angle:	+30° -90°
Swing continuous:	360°
Boom stroke:	6' (1829mm)
Outrigger length:	Adjustable to Furnace diameters
Weight:	30,860 lbs. (13,999kg)

ELECTRIC MOTOR

60 HP, 3 Ph, 230/460 VOLT, 60 Hz, 1825 RPM

OPTIONAL BOOM TYPES AND STROKES

Roller boom 60R 5 ft stroke,
 Roller boom 48R 4 ft stroke,
 Slide plate boom 48W 8 ft stroke,
 Slide plate boom 36W 6 ft stroke,
 Slide plate boom 30W 5 ft stroke

KT-GRANT

HYDRAULIC SYSTEM

Pump NO #1:	Gear
Pump NO #2:	Gear
Operating pressure:	1700 PSI (116 BAR).
Boom hoist cylinders two (2).	
Boom telescopic cylinder one (1).	
Tool cylinder one (1).	
Reservoir capacity :	88 GAL (333L)
Hydraulic fluid:	As per customer requirements

HAMMER

Model:	GRH-125 Hydraulic
Tool bit diameter:	3" (76.2mm)

CONTROLS

Wired on / off rocker switch pendant controls.

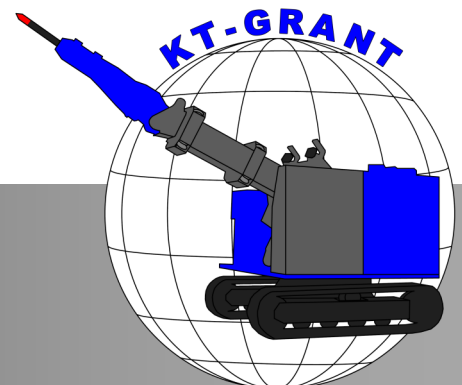
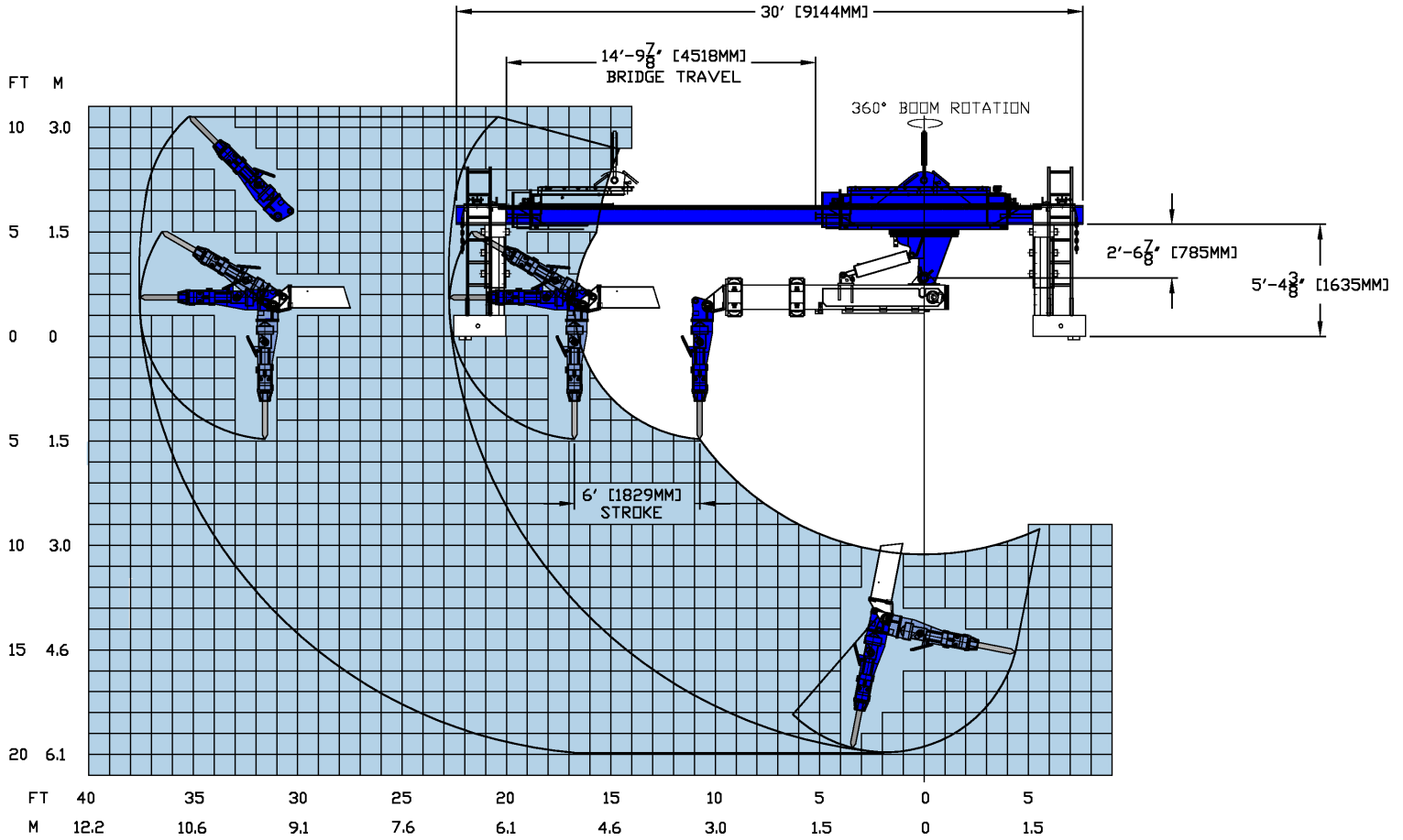
OPTIONAL EQUIPMENT

Pneumatic hammer, Radio controls, Proportional load sense controls, Cable management system, Tool bits, and Spades.



GEF-530-72R with optional cable management system

GEF-530-72R WORKING RANGE



3073 RT 66
Export, PA 15632
724-468-4700 Fax: 724-468-8188
www.kt-grant.com