

The GOM-360BDR Series II is a pendant controlled diesel or electric powered, hydraulically actuated track machine. The 360° rotating telescopic boom is mounted on a turntable deck that rotates 360° continuous.

The telescopic boom is a single stage roller boom that has 10 ft. of stroke. The boom can be raised 30° above the horizontal center line of the boom and lowered 90° below center. The tool end of the boom, along with the 360° rotation, allows the operator to place the hammer, bucket, or various other attachments in the proper work position.

The deck and boom assembly are mounted on a set of hydraulically driven crawlers for mobility over rough terrain. Each crawler can be independently operated allowing complete rotation about the machine's center line.

The GOM-360BDR Series II is suited for situations where space may be limited or the application may not require heavier equipment such as our GOM-360BDRE Series II.

The GOM-360BDR Series II is available with many options or can be specially designed to fit your application.



SPECIFICATIONS

GENERAL

Machine length:	16'-10"	(5122 mm)
Machine width:	7'-1/2"	(2146 mm)
Machine height:	7'-11-1/2"	(2426 mm)
Reach from center of rotation to end of hammer (with out tool bit):	24'-7"	(7500 mm)
Reach below floor to hammer end vertical without bit:	14'-11"	(4546 mm)
Reach from front of track extended hammer @ 0°:	20'-4-1/2"	(6212 mm)
Vertical reach end of hammer with boom up extended:	18'-4"	(5590 mm)
Boom stroke:	10'	(3048 mm)
Boom angles:	+30° -90°	
Tool angles:	+30° -90°	
Swing continuous:	360°	
Boom tilt non-continuous:	360°	
Tracks:	Independent bi-directional	
Travel speed:	1.2 MPH	(2 KPH)
Weight:	29,300 lbs	(13,290kg)

CONTROLS

Wired on / off rocker switch pendant controls.

HYDRAULIC SYSTEM

Pump NO #1:	Axial Piston
Pump NO #2:	Axial Piston
Pump NO #3:	Gear
Operating pressure:	1950 PSI (134 BAR)
Boom hoist cylinders:	two (2)
Boom telescopic cylinder:	one (1)
Tool cylinder:	one (1)
Reservoir capacity:	150 GAL (568 L)
Hydraulic fluid:	As per customer requirements.

ENGINE

Model:	John Deere 4045
Type:	Diesel Tier IV, liquid cooled, four cylinder
Output:	125 HP @ 2300 RPM (93 KW)
Fuel capacity	40 GAL (151L),
Fuel consumption	6.7 GAL (25 L) per hour average @ full load

HAMMER

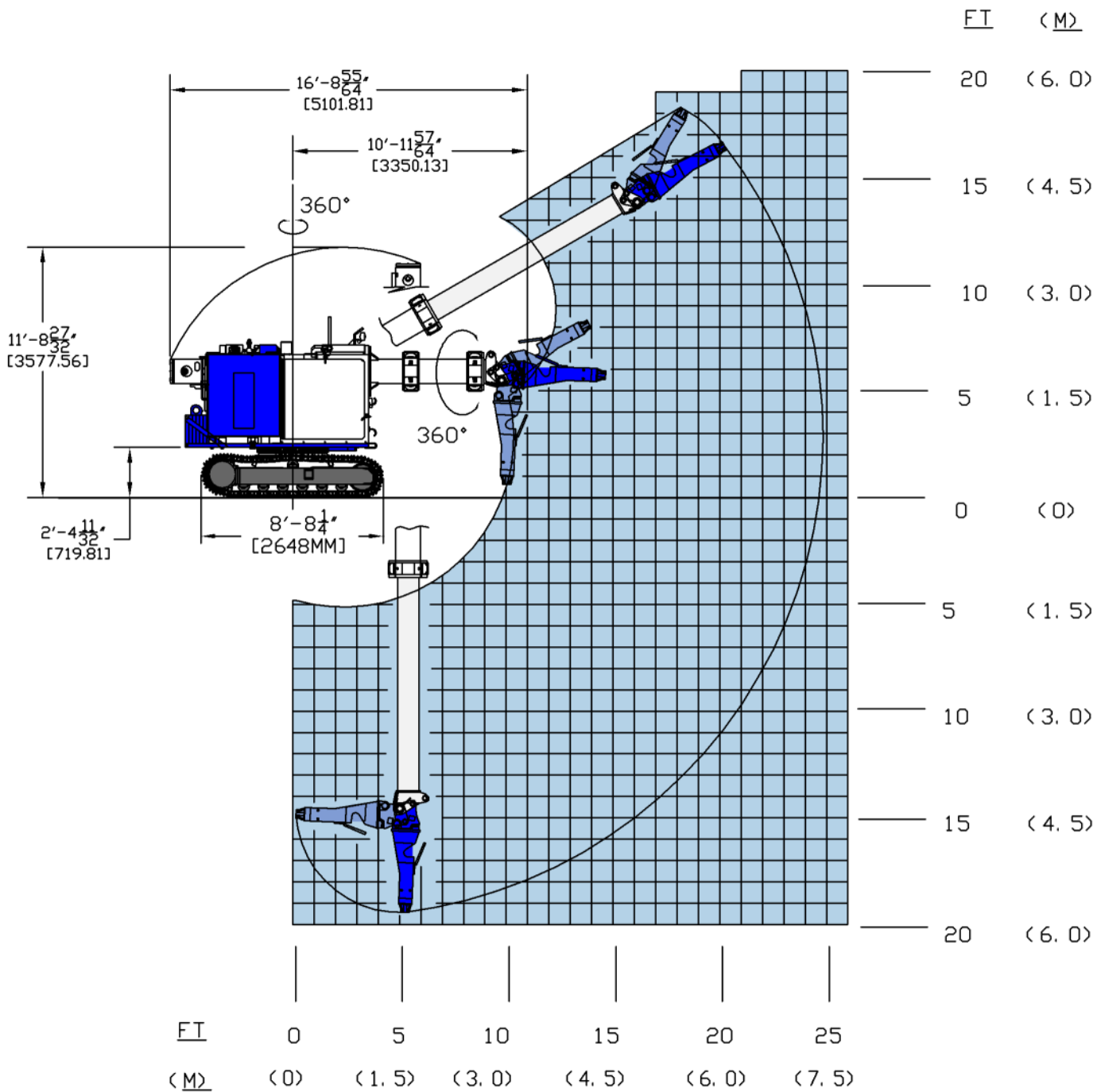
Model:	GRH-125 Hydraulic
Tool bit diameter:	3" (76.2MM)

OPTIONAL EQUIPMENT

Radio controls, proportional controls, refractory spray head, pneumatic hammer, shear, grapple, electric prime mover, operators cab, scrapper bit, reamer bit, tap hole drill and insert system, spade bit, blast furnace trough grinder, buckets scoop, and extended inner boom up to 6 ft., porous plug pusher.

KT-GRANT

GOM-360BDR Series II WORKING RANGE



3073 RT 66
Export, PA 15632
724-468-4700 Fax: 724-468-8188
www.kt-grant.com