

Our most popular ladle skimmer, the GSK-190 utilizes a telescopic boom equipped with a paddle to skim kish/slag off the top of hot metal into slag pits or pots located below.



The GSK-190 is equipped with a vertical lift which allows the operator to control the unit in a vertical plane. This feature allows the operator to adjust the depth of the paddle for different applications. The unit is permanently mounted while still allowing the versatility of adjusting for different depths.

The machine is controlled from a console unit located safely nearby, allowing proper vision. The GSK-190 can be equipped with an operator's cab and optional air conditioning unit. A nitrogen bubbler/lance is also available which when inserted into the metal, forces the dish/slag to the front center of the ladle making skimming more productive. Various paddle types are available to suit your application.

SPECIFICATIONS

GENERAL

Machine length based on stroke
Stroke as per customer requirements up to: 25' (7620 mm)
Machine width: 4'-6" (1372 mm)
Machine height minimum
Based on vertical lift requirements:
Reach from center of rotation
Based on stroke and tail swing:
Boom vertical lift: up to 5' (1524 mm)
Swing angle up to: 355°
Base: 4'-6" SQ. (1372 mm)
Skimmer weight dependant on stroke and configuration: 11000-15000 LBS

POWER UNIT

Pump: Piston pressure compensated.
Operating pressure: 1200 PSI (82 Bar)
Motor: 40 Hp, 3 Ph, 230/460V, 60 Hz, 1765 Rpm
Reservoir heater: 460 Vac.
Hoist cylinders: two (2)
Reservoir capacity: 100 Gal (379L)
Hydraulic fluid: As per customers requirements

OPERATING SPEEDS

Telescope: 4 ft/sec (1219 mm/sec)
Hoist: 2 in/sec (51 mm/sec)
Swing: 5 Deg/sec

CONTROLS

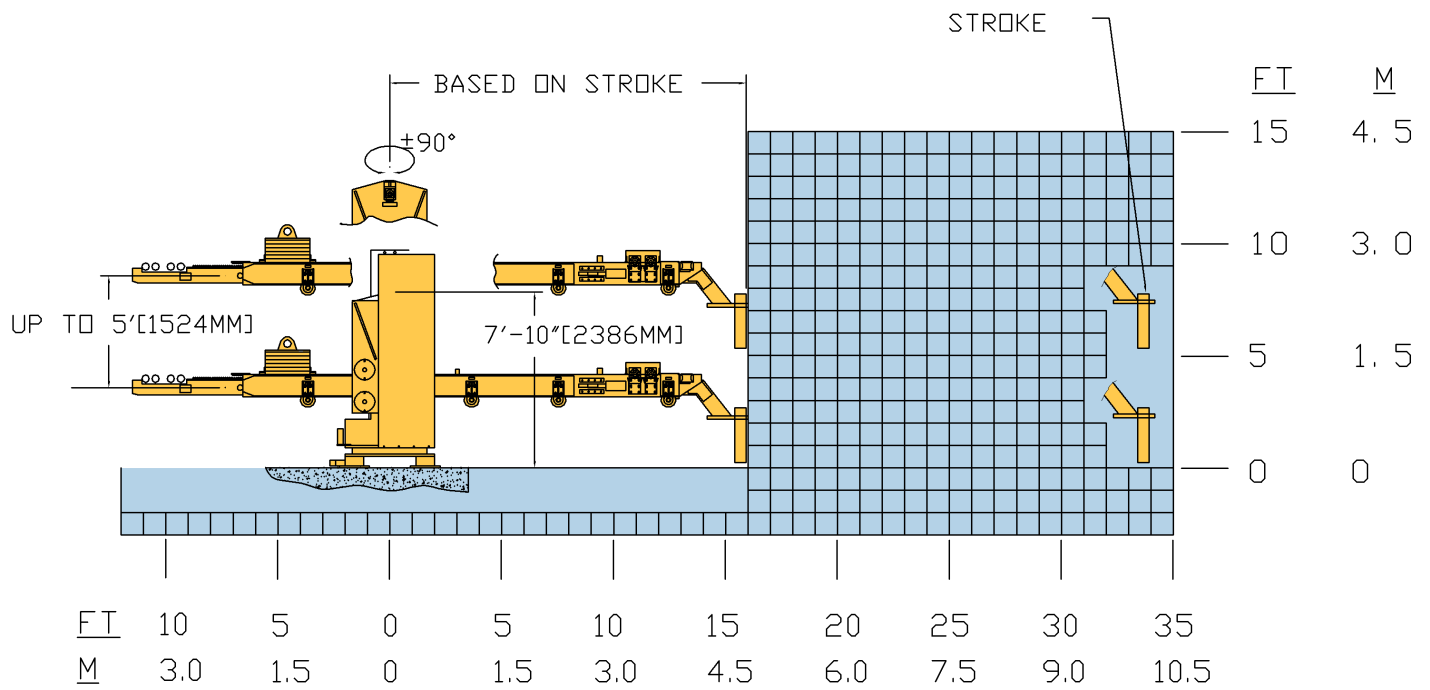
Control console: 24" SQ. (610 mm)
Height: 40" (1016 mm)
Valves: Three (3) sub plate mounted proportional manual actuated.
Weight: 400 lbs. (181Kg)

OPTIONAL EQUIPMENT

Double power unit, electric proportional load sense, Pendant controls, power unit dust covers, on and off board operators cab and power units, air conditioning.

KT-GRANT

GSK-190-18-5 WORKING RANGE



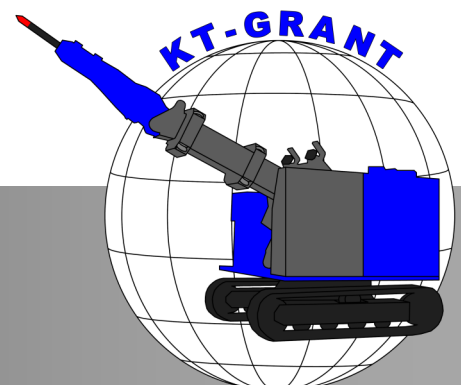
Optional On-Board
Operator's Cab and
Power unit



Free Standing Hydraulic Power



Dual Joystick Control



3073 RT 66
Export, PA 15632
724-468-4700 Fax: 724-468-8188
www.kt-grant.com