

KT-30R SERIES II

Designed and built by a company with over 30 years of proven demolition experience, KT-Grant's KT-30R Series II machine captures demolition and tear-out jobs that require ruggedness, versatility and power.

Built specifically for impact hammering, the KT-30R Series II has powerful and well protected hydraulics, along with a remote control system that gives operators the confidence and safety to "muscle-out" tough jobs.

A unique, double-pivot boom design keeps overall the overall profile height low but unfolds for maximum reach when needed.

Clearly built for steel mill duty, the KT-30R Series II can bring reliability and toughness to any demolition job.

When demolition work needs to be done, don't settle for a machine that was built to dig dirt.



SPECIFICATIONS*

GENERAL

Machine length:	19'-3"	(5867 mm)
Machine width:	6'-10-1/4"	(2089 mm)
Machine height:	7'-4"	(2235 mm)
Reach from center of rotation to end of hammer (with out tool bit):	25'	(7620 mm)
Reach below floor to hammer end vertical without bit	12'-10 1/2"	(3930 mm)
Reach from front of track end of hammer @ 0°:	20'-9"	(6327 mm)
Vertical reach end of hammer stick with boom up extended:	31'-11"	(9732 mm)
Boom stroke:	10'	(3048 mm)
Boom angles:	+0° -55°	
Tool angles:	+30° -90°	
Swing continuous:	360°	
Boom tilt non-continuous:	350°	
Stick angle:	-0° +55°	
Tracks:	Independent bi-directional	
Travel Speed:	1.0	(1.6 KPH)
Weight:	26,700 lbs.	(12,110 kg)

HYDRAULIC SYSTEM

Pump NO #1:	Axial Piston
Pump NO #2:	Axial Piston
Pump NO #3:	Gear
Operating pressure:	1950 PSI (134 BAR)
Stick hoist cylinders:	Two (2)
Boom hoist cylinders:	Two (2).
Boom telescopic cylinder:	One (1).
Tool cylinder:	One (1).
Reservoir capacity:	150 GAL (568L)
Hydraulic fluid:	As per customer requirements.

ENGINE

Model:	John Deere 4045
Type:	Diesel Tier III, liquid cooled, four cylinder
Output:	99 HP @ 2300 RPM (73.8 KW)
Fuel capacity:	40 GAL (151L),
Fuel consumption	5.8 GAL (21.9L) per hour average @ full load

HAMMER

Model:	GRH-125 Hydraulic
Tool bit diameter:	3" (76.2 mm)

CONTROLS

Wired on / off rocker switch pendant controls.

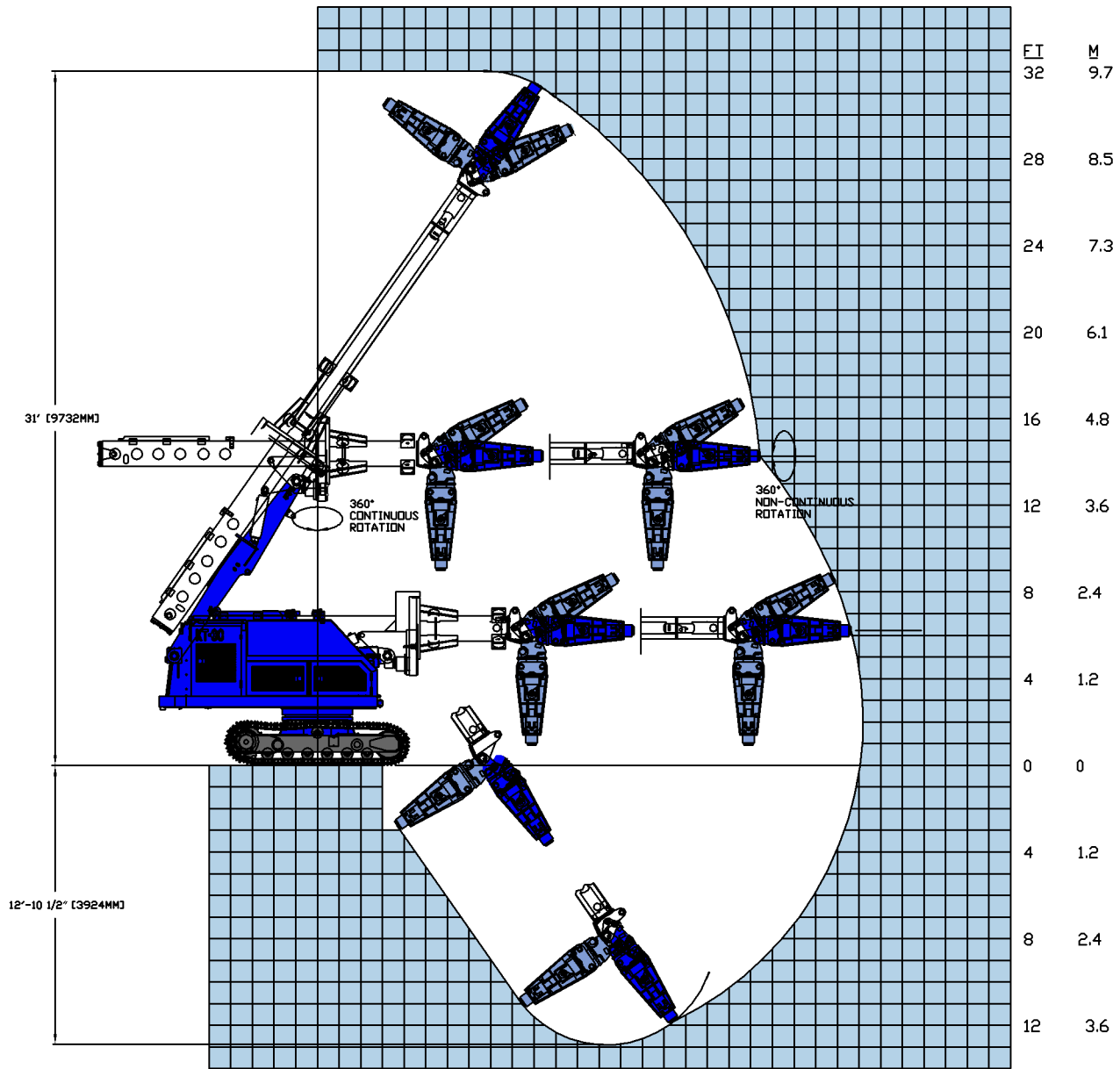
OPTIONAL EQUIPMENT

Radio controls, proportional controls, refractory spray head, pneumatic hammer, shear, and grapple, electric prime mover, operator's cab, scrapper bit, reamer bit, tap hole drill and insert system, spade bit, blast furnace trough grinder, scoop buckets, extended inner boom up to 6 ft, porous plug pusher.

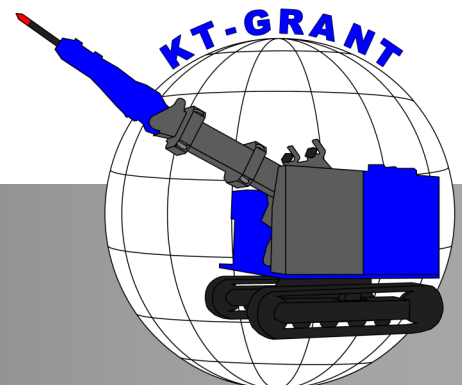
KT-GRANT

*All product specifications are subject to change without notice to improve reliability, function, design or otherwise.

KT-30R Series II WORKING RANGE



FT	4	0	4	8	12	16	20	24	28
M	1.2	0	1.2	2.4	3.6	4.8	6.1	7.3	8.5



3073 RT 66
Export, PA 15632
724-468-4700 Fax: 724-468-8188
www.kt-grant.com